



JANUARY

FOURTH GRADE NEWSLETTER

READING

THIS MONTH, WE ARE IN THE MIDDLE OF OUR READ ALOUD OF TIGER RISING. STUDENTS ARE LISTENING FOR EXAMPLES OF AUTHOR'S CRAFT DURING OUR READING. LOOKING FOR EXAMPLES OF REPETITION, TONE, AND WORD CHOICE.



BE SURE TO READ EVERY NIGHT AND KEEP LOOKING FOR FIGURATIVE LANGUAGE TOO!

SPELLING/PHONICS

- SORT #16 AGENTS AND COMPARATIVES
- SORT #17 MORE FINAL SYLLABLE /ER/ SPELLED -CHER, -TURE, -SURE, -URE
- SORT #18 UNACCENTED FINAL SYLLABLE /EN/ SPELLED -EN, -ON, -AN, -AIN
- SORT #19 UNACCENTED INITIAL SYLLABLE A-, DE-, BE-

MATH

WE WILL BE CONTINUING THE BRIDGES UNIT EMPHASISING ON COMPARING MULTI DIGIT NUMBERS, AND USING THE STANDARD ALGORITHM FOR ADDITION AND SUBTRACTION. IN ADDITION, MEASURING LENGTH, DISTANCE, LIQUID VOLUME, TIME, MASS AND WEIGHT WILL ALL BE ADDRESSED.



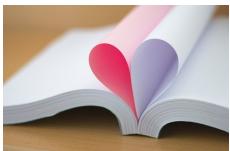
REAL WORLD CHALLENGE:

JANUARY CAN POTENTIALLY BE A SNOWY MONTH, WHICH IS GREAT FOR MATHEMATICIANS! THE NEXT TIME YOU'RE PLAYING OUTSIDE, WHY DON'T YOU MEASURE A SNOWDRIFT? CAN YOU MEASURE IT AGAIN AFTER A SUNNY DAY AND FIND THE DIFFERENCE? HOW ABOUT THE CIRCUMFERENCE AND WEIGHT OF A SNOWBALL? WHAT IS THE DISTANCE FROM THE TOP OF THE HILL TO THE BOTTOM OF THE HILL THAT YOU JUST SLED DOWN? THE POSSIBILITIES ARE ENDLESS!



WRITING

WRITING THIS MONTH WILL CONTINUE TO BE DEDICATED TO NARRATIVE TEXT. WE WILL WORK ON SHOW, DON'T TELL, FEELING AND DRAFTING THE HEART OF A STORY, ORIENTING READERS WITH SETTING, STUDYING PUBLISHED TEXTS TO WRITE LEADS AND COMPOSING POWERFUL ENDINGS. BE SURE TO ASK YOUR CHILD TO IDENTIFY THESE TRAITS AS THEY READ THEIR OWN CHAPTER BOOK.



SOCIAL STUDIES

IN THE NEW YEAR FOURTH GRADE CONTINUES TO WORK ON THE MIDWEST REGION! BE SURE TO STUDY THE STATES AND CAPITALS OF THE REGION A FEW MINUTES EACH DAY! IN THE CAR OR AT THE DINNER TABLE, MAKE IT A GAME AND STUDY, STUDY, STUDY! REMEMBER, SPELLING COUNTS!



Please contact your child's teacher with any questions or concerns

Bernadette Linero, linerob@shermanschool.com | Shannon Oricchio: oricchios@shermanschool.com



JANUARY

FOURTH GRADE NEWSLETTER

TIPS FROM SPECIALISTS + THINGS TO PONDER

A note from: Mrs. Rianhard
rianhardj@shermanschool.com
 Just a reminder: Our school focus for the 2019-2020 school year is "Math is Everywhere!" Please email me a picture and/or a brief statement of your child observing math outside of school.



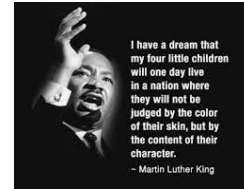
"There is more treasure in books than in all the pirate's loot on Treasure Island." - Walt Disney

Books make great holiday gifts! The Horn Book Fanfare list has plenty of suggestions [here](#) and The New York Times "[Story Time](#)" column is full of great titles for kids of all ages. Happy holidays, and happy reading!

Mrs. Flynn
 Contact Mrs. Flynn at flynnc@shermanschool.com

REMINDERS + IMPORTANT DATES TO REMEMBER

- NO SCHOOL 1/1/20-NEW YEAR'S DAY
- NO SCHOOL 1/7/20-TEACHER IN SERVICE
- NO SCHOOL 1/20/20-MLK JR. (OBSRV)
- THREE HOUR DELAY OPENING 1/21/20-TEACHER IN SERVICE



MATH IS EVERYWHERE!

PHYSICAL EDUCATION

Ms. Reidy
reidys@shermanschool.com

Continue to administer the physical fitness push-up & curl-up tests.

Floor Hockey fundamentals and games!

HEALTH

Ms. Blume
blumea@shermanschool.com

We will be learning about bullying prevention and conflict resolution!

ED-TECH

Mr. McGuire
mcguiret@shermanschool.com

We have a bit of work remaining with our robotics engineering unit. Then we will pivot to work with Tinkercad. The eventual goal will be to design and 3D print a boat that we will then subject to several design tests in water.

MUSIC/BAND

Mr. Trinchillo
trinchillos@shermanschool.com
 Mr. Carlone
Carlonec@shermanschool.com

Band Students are preparing for their Winter Concert performances!

General Music-Continue unit on triple meter time signatures.

Using our choice instrument to read these rhythms.

ART

Mrs. Yagid
yagidj@shermanschool.com

Students will continue to work independently through a student-choice project. Many students are working collaboratively on three-dimensional sculptures; others are exploring paint!

STEAM

Mr. Rianhard
rianhards@shermanschool.com

We begin with paint splatter machines, looking at how energy moves. What are the different kinds of energy we can discover together...

Please contact your child's teacher with any questions or concerns

Bernadette Linero, linerob@shermanschool.com | Shannon Oricchio: oricchios@shermanschool.com